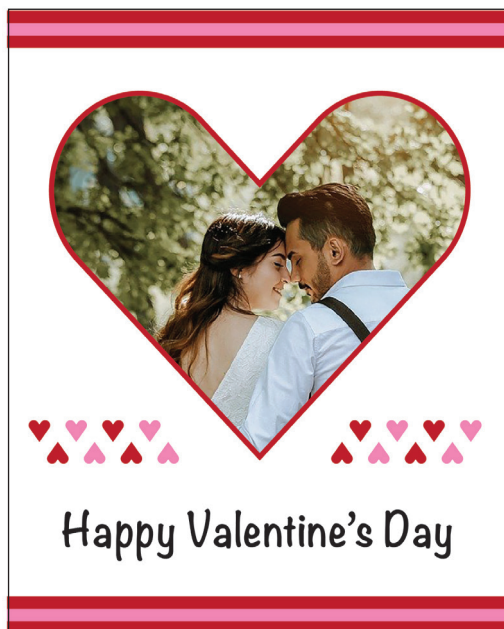


## Design a Valentine's Day Card with Adobe Illustrator

Learn basic techniques in Illustrator to draw a heart shape and fill a shape with an image.



### Learning Resources

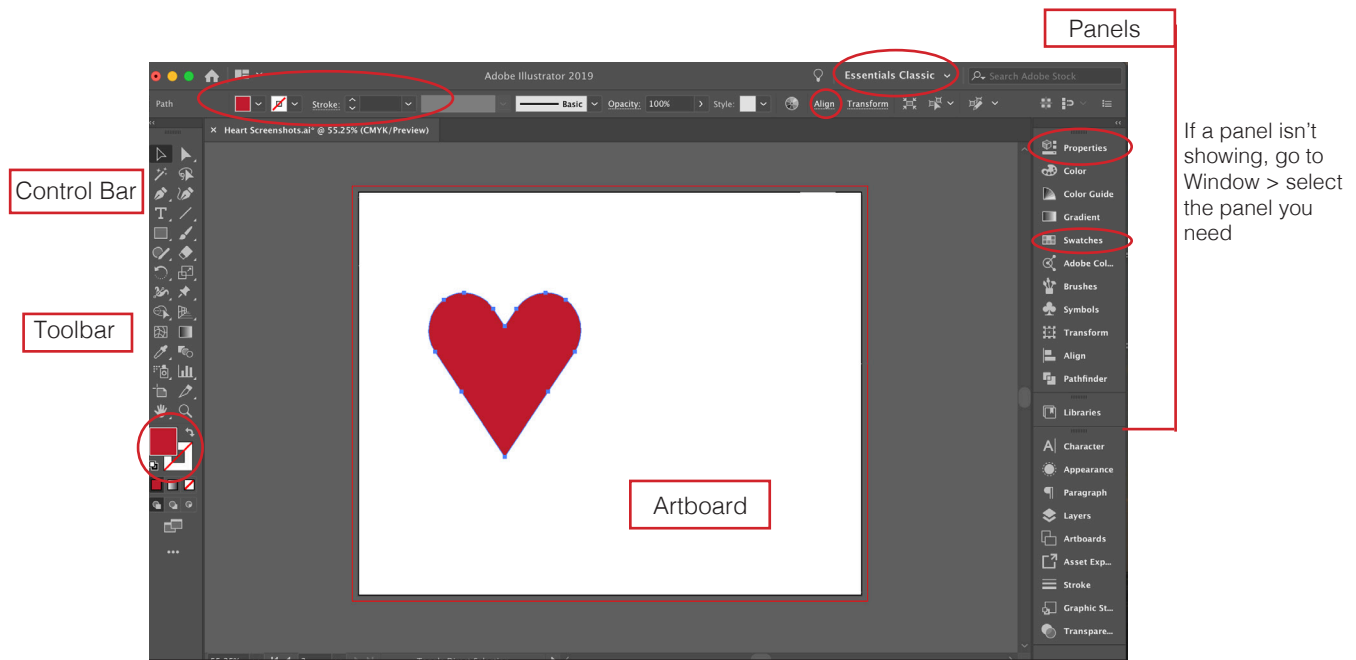
**for AHML Cardholders**  
**One-on-One Virtual Appointment**  
with Digital Services Staff (½ hour)  
AHML.info > Services > Request an Appointment

**Udemy Online Learning**  
AMHL.info > Services > Online Learning

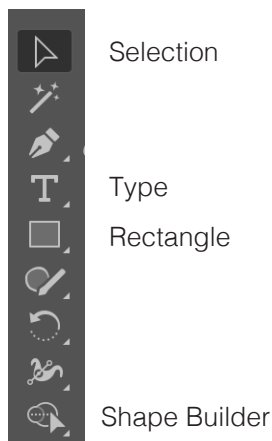
**For Everyone**  
**Adobe Tutorials:** [helpx.adobe.com/illustrator/tutorials/](https://helpx.adobe.com/illustrator/tutorials/)



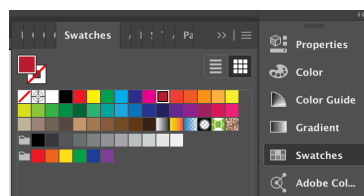
# Illustrator Workspace



## Tools

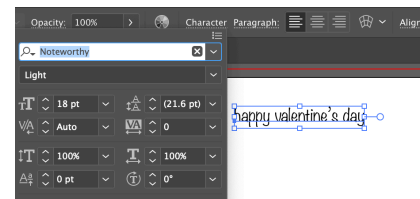


## Swatches



Open Swatches from either the top Control Bar or the Swatches Panel on the right.

## Text



Select the Type tool, click on the artboard and start typing. Use the Character Panel on the Control Panel or in the Properties Panel to change the font. .

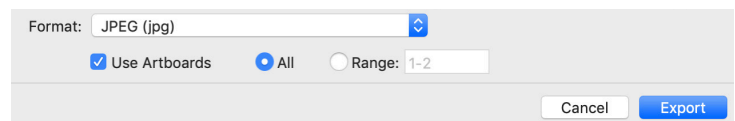
## Create a New Project

Open Illustrator and select Create New  
Set your desired artboard size.

Color Mode = CMYK for home printer  
Raster Effects (Resolution) = 300 ppi

\* If using a print service or sharing on social media use RGB color mode and check their site for resolution and other settings.

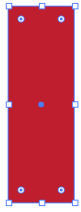
## Export as JPEG



File > Export As > Change Format to JPEG  
Select Use Artboards > Export  
On next screen set Image Quality to Maximum

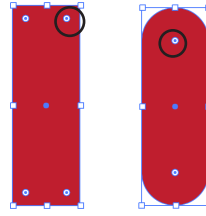
# Draw a Heart Shape

## 1. Draw a Rectangle



Select the Rectangle tool and click and drag on the artboard to create a shape. In the Swatches panel, select a red color for the fill and no stroke.

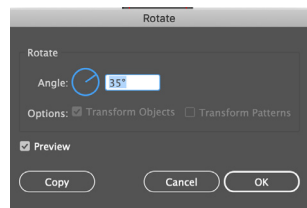
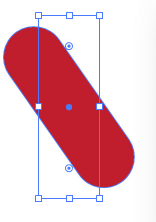
## 2. Round the Corners



Click on one corner widget and drag to the center until they meet to form a pill shape.

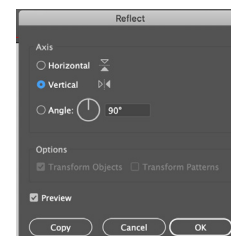
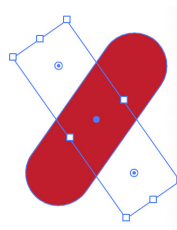
## 3. Rotate 35 degrees

Right click on the shape.  
Select Transform > Rotate > set angle to 35 degrees > OK



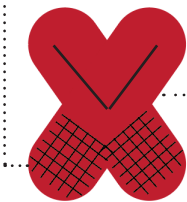
## 4. Reflect Vertical & Copy

Transform > Reflect Vertical > Copy

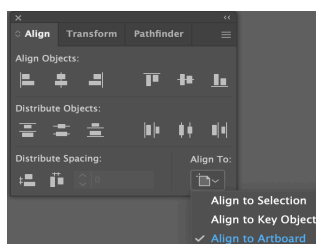
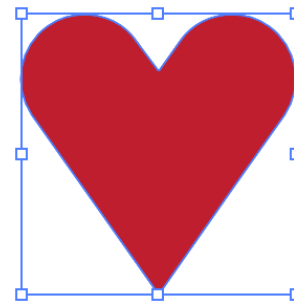


## 5. Shapebuilder Tool

Select both shapes with the direct selection tool.  
With the Shapebuilder Tool hold the Opt/Alt key and click on the sections to remove.



Next, with the Shapebuilder Tool selected, draw through the remaining sections to joint into 1 shape (without pressing the Opt/Alt key).



Copy a series of hearts and use the Align Panel to arrange them:

To line up on center: Align to Selection > Vertical (or Horizontal) Align Center

To distribute evenly across the page:

Align to Artboard > Distribute > Vertical (or Horizontal) Center

To flip the hearts > Transform > Reflect Horizontal > Copy

# Insert an Image into a Shape

## 1. Import Image

File > Place > select image > click on the artboard.

To change the size of the image:

Hold the shift key and drag the image box handles.

To crop the image:

Object > Crop Image and drag the crop box handles to the desired location. Press return.

## 2. Add Heart Shape

Make heart shape with no fill color and a red stroke.  
Position the heart over the image.

Resize and position the heart and image as desired.



If the heart shape is not visible, it may be behind the image.  
Object > Arrange > Bring to Front

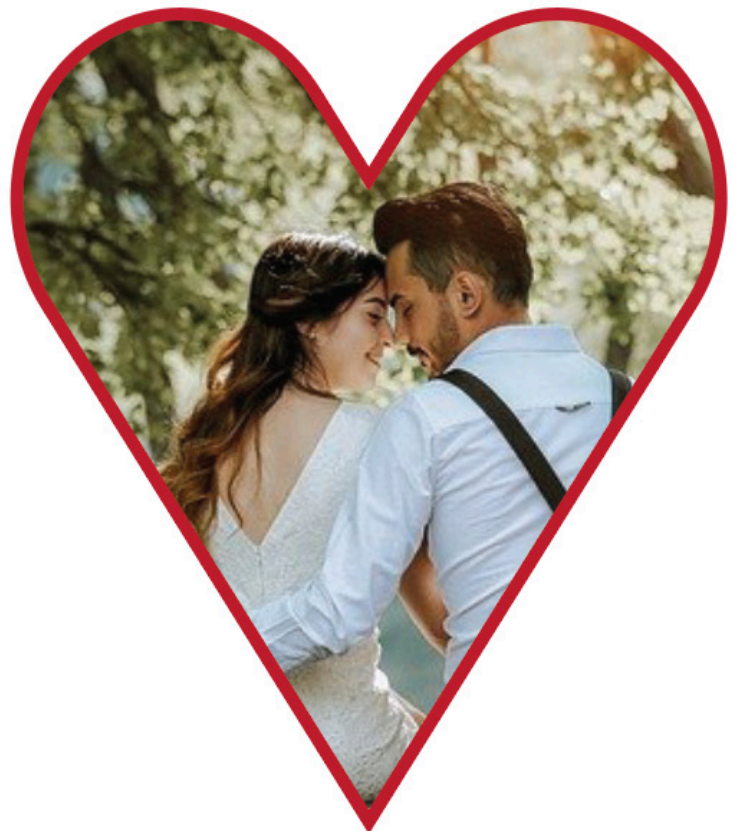
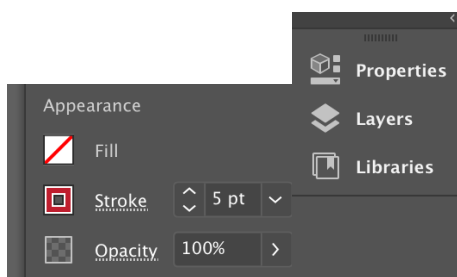
## 3. Make a Clipping Mask

A clipping mask “clips” the top object (heart) to the lower object (image) and masks out the remainder of the image so it isn’t seen.

Select both the heart and the image.

Object > Clipping Mask > Make

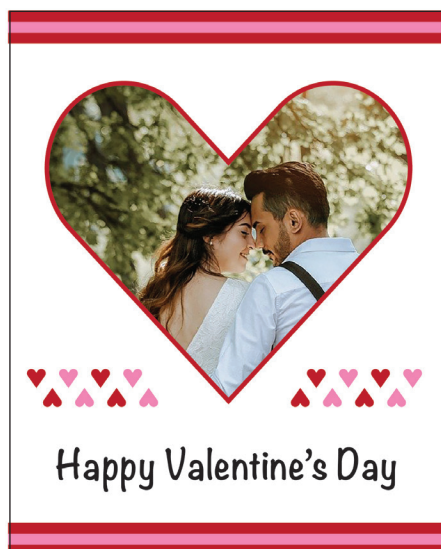
To change the size of the stroke on the heart shape, open the Properties Panel on the right. Go to Windows > Properties if it isn’t showing.





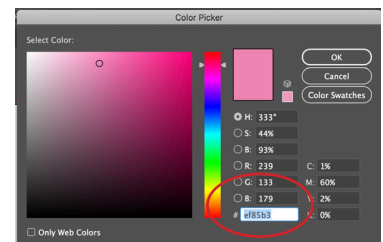


1. Create a new artboard 4" x 5", CMYK color mode & 300 ppi.
2. Draw a red rectangle across the top of the card.
3. Copy it and move to the bottom of the card. For a quick copy, select the shape and hold the Opt/Alt key while moving it.
4. Import an image: File > Place > select image from files > click on the artboard to place the image.  
To change the size of the image:  
Hold the shift key and drag the image box handles.  
To crop the image:  
Object > Crop Image and drag the crop box handles to the desired location. Press return.
5. Add hearts and align (see page 3).
6. Add text (see page 2).



1. Increase size of the red rectangle and add a smaller pink rectangle on top of it.
2. Add an image clipping mask. (see page 3).
3. Add hearts and text see page 2 & 3).

To change the color, click on the fill color swatch at the bottom of toolbar to open the Color Picker. Change to #EF85B3.



Make a clipping mask with a rectangle shape. Draw a line with the line tool and match the stroke size and color on the rectangle shape.



Add a red stroke and change the font to red, Courier Bold to make a conversation heart.

